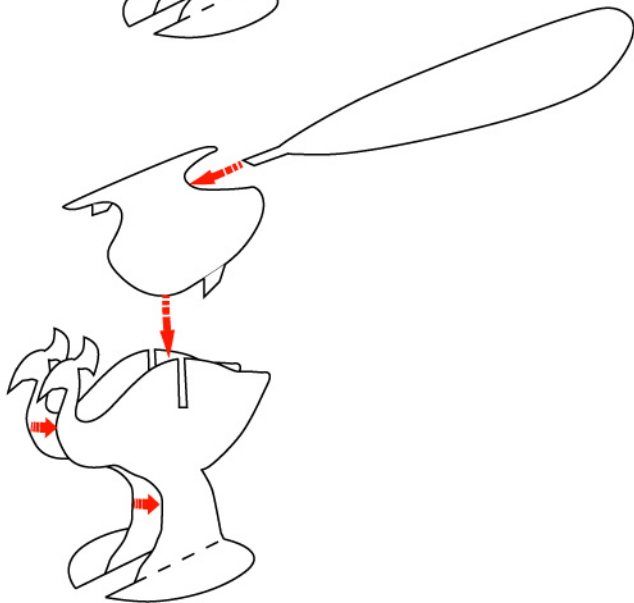
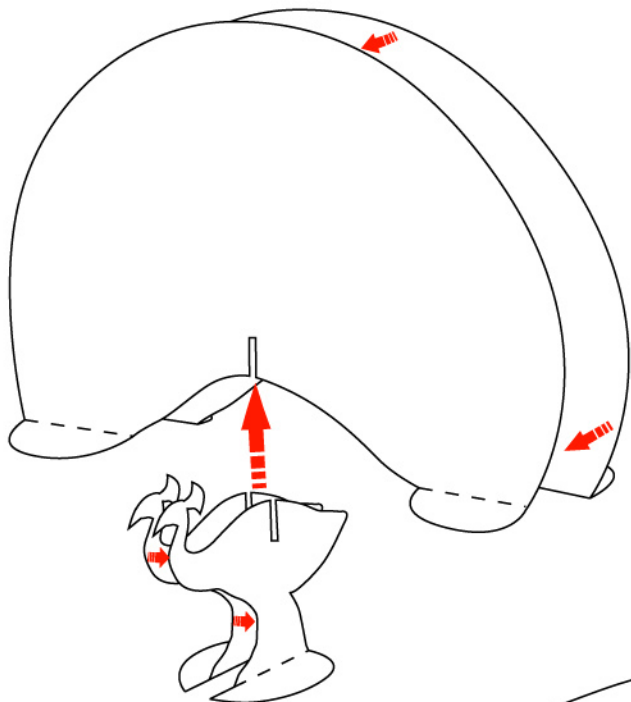
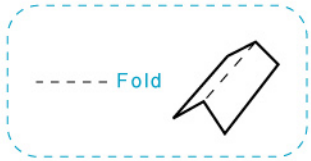


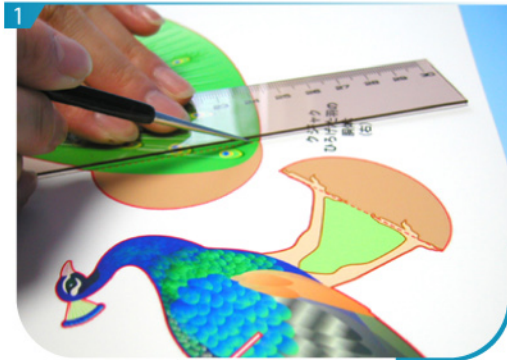


### Assembly Instructions





Basic steps

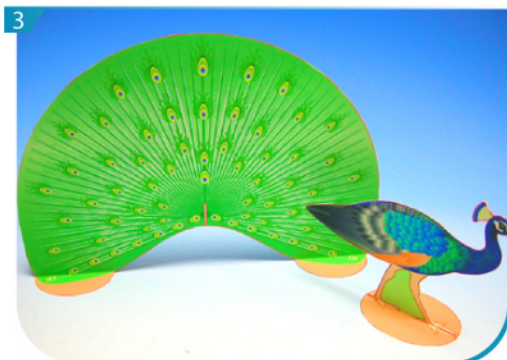


Use a pen whose ink has dried out, or a tracer, to trace lines first.

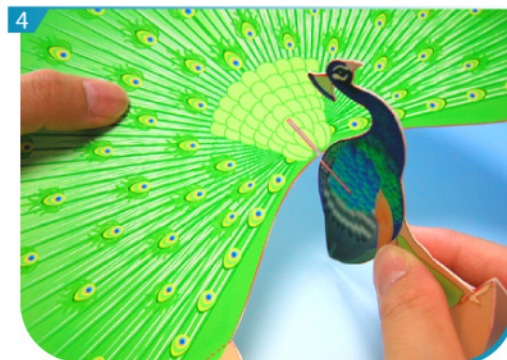


Separate all parts along the lines. Mark their identity on the back to avoid confusion.

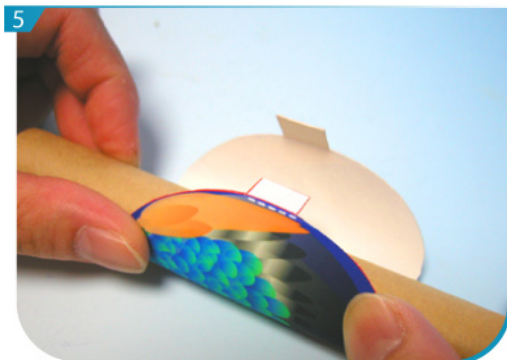
Instructions



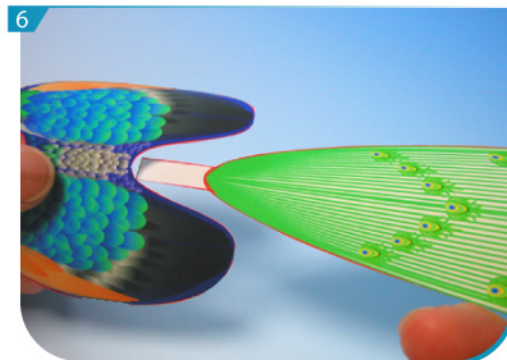
Fold and glue P01 and P02, P03 and P04 respectively.



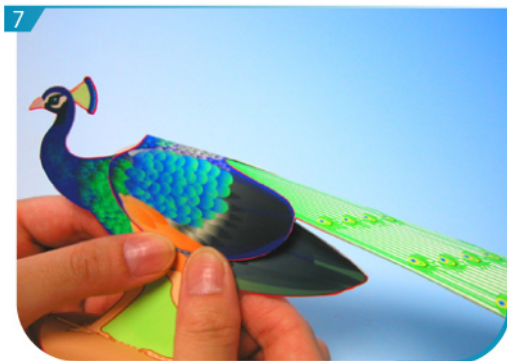
Glue the above parts together according to the assembly instructions to form a Peacock open wing.



Fold and glue P05 and P06, use a cylindrical pen to roll P07 and P08.



Glue P07 and P08 to form wing of Peacock.



Finally, glue the wing and the body and you have a pair of Peacocks!